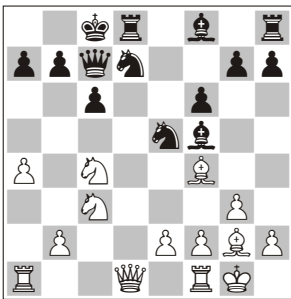


Castling Queenside in the Slav

by Larry Kaufman

- | | |
|---------|-------|
| 1. d4 | d5 |
| 2. c4 | c6 |
| 3. ♘f3 | ♘f6 |
| 4. ♘c3 | dc4 |
| 5. a4 | ♙f5 |
| 6. ♖e5 | ♘bd7 |
| 7. ♘c4 | ♚c7 |
| 8. g3 | e5 |
| 9. de5 | ♘e5 |
| 10. ♙f4 | ♘fd7 |
| 11. ♙g2 | f6 |
| 12. 0-0 | 0-0-0 |



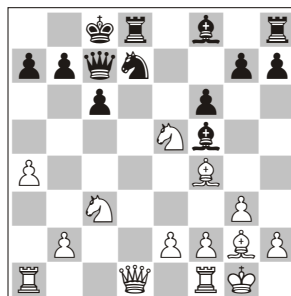
For many years now, 6. ♖e5 has been considered the critical line of the Slav, and is probably the main reason that the true Slav (4...dc4) is not as popular in high-level play as the Semi-Slav and the ...a6 Slav. All this may be about to change, due to a novelty for Black by grandmaster Jonny Hector, who used it to defeat the higher-rated grandmaster Boris Avrukh recently.

12...0-0-0(!) is a rare move with a bad reputation, but other moves have not done well for Black and so most players with black avoid the line by 11...g5 or 7...♘b6.

Note though that there are no important deviations for White after move 6; if this line is satisfactory for Black then 6. ♖e5 becomes questionable. The line is supposed to be bad for Black due to 13. ♚c1, when 13...♘c5 loses a pawn while the obvious 13...g5 favours White after 14. ♖e5 ♖e5 15. ♙e3. But the Hector game showed that Black's pawn loss is a completely correct gambit; after extensive analysis I have been unable to demonstrate any route to even the slightest edge for White after 13...♘c5!, though naturally he shouldn't lose.

Alternatives

Of course 13. ♚c1 is by no means the only move for White here. Amazingly, soon after I saw the above game and realized how strong 12...0-0-0 is, I had the opportunity to play it twice in a major tournament (the Atlantic Open in Washington DC) against grandmasters. Kacheishvili replied with 13. ♖e5 (probably best)



Jonny Hector

13...♖e5 14. ♚b3 ♚f7 15. ♚f7 ♘f7 16. ♚fc1 (16.a5, as in Esen-Cs.Balogh, is probably better and seems to lead to just a nominal edge) 16...♙d6 17. ♙d6 ♘d6 18. ♘b5, when 18...♖e4! would fully equalize. Instead I played two second-best moves in a row and got a difficult position, eventually losing.

Then, against grandmaster Sharavdorj, I faced 13. ♖e3 ♙e6 14. ♚c2?! (14. ♚c1 or 14. ♘cd5 are better but just equal) 14...g5 (14...♙b8 is probably even better) with a pleasant position for Black. I soon got a big advantage and finally an easily winning ending, only to carelessly allow a fortress draw in mild time pressure.

Another reasonable move is 13. ♖e4, but after 13...♙b8 Black is fine.

An Odd Tempo-Giver

While annotating the games for this article I came across a game between two rather low-rated Norwegian players, Hoie vs. Hersvik, won quickly by White, in which **13.♖c1** was played, which looks a bit odd in that the white queen is driven to e1 with tempo. Much to my surprise, it proved rather difficult to find a path to equality for Black, but I believe that **13...♗c5 14.♞e1 a5!**

(to prevent b4) comes pretty close; as with **13.♗e5** White's endgame edge is rather miniscule. Still, this line is a bit murky, so I recommend that white players look for improvements here.

Conclusion

So it seems that **12...0-0!** is definitely the best move for Black here, and makes this line deserve to be considered the

main line after **6.♗e5**. The best that White can achieve based on my analysis is a choice between two marginally better endgames. If these lines are deemed satisfactory for Black, then the Slav should rise in popularity as White is forced to turn to the less ambitious **6.e3** (or **6.♗h4**).

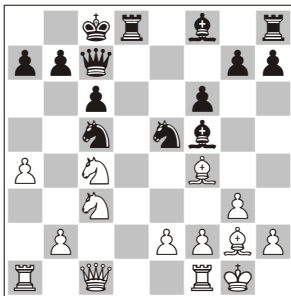
In my opinion Hector's **13...♗c5!** is a prime candidate for the most important theoretical novelty of the year.

Hector's Novelty 13...♗c5

Avrukh, Boris
Hector, Jonny

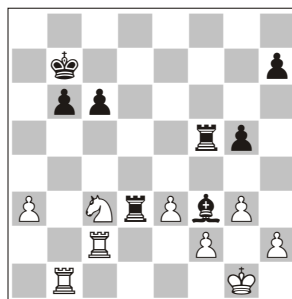
Helsingor 2009 (5)

1.d4 d5 2.c4 c6 3.♗f3 ♗f6 4.♗c3 dc4 5.a4 ♗f5 6.♗e5 ♗bd7 7.♗c4 ♞c7 8.g3 e5 9.de5 ♗e5 10.♗f4 ♗fd7 11.♗g2 f6 12.0-0 0-0! 13.♞c1?! [Considered best but after Black's novelty it must be relegated to the dustbin] 13...♗c5!N



[An excellent pawn sacrifice] **14.♗e5** [Virtually forced] **14...fe5 15.♞e3 ♗b3 16.♞ad1 ♗c5 17.♞e5** [White has already paid for the pawn with the bishop pair, so he takes it] **17...♞e5 18.♗e5 ♞he8** [The bishop pair in an open position plus White's weak queenside pawns and inferior development guarantee Black at least full compensation for the pawn] **19.♗c4?! [19.♗f7 ♞d1 20.♞d1 ♗c2! 21.♗h3 (21.♗d6?? ♗d6 22.♗d6 ♞c7--+) 21...♞b8 22.♗d8 (22.♗d7 ♞e7 23.♗g5**

♞d7 24.♗d7 ♗d2=) 22...♞d8 23.♗d8 ♗b4 24.♗e6 ♗d2 25.♗g7 ♗c4 26.♗a2 ♗d2 27.♗f5 ♗f5 28.♗f5 ♗b2 29.e4 ♗a4 Black is better because the bishops are better than the knights in endings with opposing majorities; **19.♞d8** (probably relatively the best) **19...♞d8 20.♗e4 (20.e3 ♞c7 21.♞d1 ♞d1 22.♗d1 ♗d6 23.♗c4 ♗b4?) 20...♗e4 21.♗e4 ♞d4 22.♗c3 (22.♗c5 ♗c5 23.♞c1 ♗a4=) 22...♞d2 23.♗c4 ♞d4 (23...♞c2 24.♗d1 ♗b4=) 24.♗e3 ♞d2 25.♗c4=] 19...♗e6?! [19...♗d4! 20.♗e3 ♗e6 21.♞fe1 ♗c5?] 20.♗a3 [20.♗e5! ♗d4=] 20...♗d2 21.♞fe1 ♗f8 22.e3 ♗g4 23.♞c1 ♗a3 [Or 23...♞b8 with full compensation for the pawn] 24.ba3 ♗f3 25.♗f3 ♗f3 26.♞c2 g5 27.♗b5 ♞d3 28.♞b1 b6?! [28...a6 29.♗d4 (29.♗c3 ♞f5?) 29...♗e4 30.♞bc1 ♞a3?] 29.a5 ♞b7 30.♗c3 [30.♗d4! ♗e4 31.♗e6=] 30...♞f5 31.ab6 ab6**



32.♞cc1?? ♞a5? [32...♞c5 33.♞b6 ♞c8 34.♞b3 ♗d5--+] 33.♗a2? ♞da3--+ 34.♗b4 ♗e4 35.♞b2 ♞a1

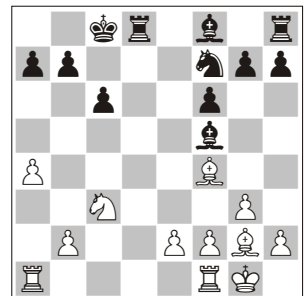
36.♞f1 ♞f1 37.♞f1 ♞b5 38.f3 ♗f3 39.♞f2 g4 40.♗d3 ♞b1 41.♗e1 b5 42.♞d2 c5 43.♞f2 ♗e4 44.♞d7 ♞c6 45.♞e7 ♞b2 46.♞f1 ♗d5 47.♞d7 ♞e6 48.♞g7 ♗g6 49.e4 ♗e4 50.♞g4 ♗d5 0-1

Atlantic Open 12...0-0

Kacheishvili, Giorgi
Kaufman, Larry Charles

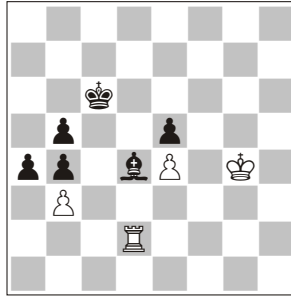
Washington DC 2009

1.d4 d5 2.♗f3 ♗f6 3.c4 c6 4.♗c3 dc4 5.a4 ♗f5 6.♗e5 ♗bd7 7.♗c4 ♞c7 8.g3 e5 9.de5 ♗e5 10.♗f4 ♗fd7 11.♗g2 f6 12.0-0 0-0 13.♗e5 [Probably the best. 13.♗e4 ♞b8=] 13...♗e5 14.♞b3 [14.♞c1 a6 15.a5 ♗c5=] 14...♞f7! [In an earlier rapid game my son IM Raymond Kaufman played another move and lost quickly to IM Sarkar] 15.♞f7 ♗f7



16.♖fc1 ♗d6 17.♗d6 ♖d6 18.♗b5 ♗b8?! [18...♗e4!+] 19.♗d4 ♗d7?! [19...♗e4 20.♗e6 ♗g2 21.♗g2 ♗d7=] 20.♖c5 [20.e3±] 20...♗he8 21.♗d1 ♖f7 [21...g6! 22.♖cc1 ♖f5=] 22.a5 a6 23.b4 ♗e5 [23...♗g5 24.♖cc1 ♖e6=] 24.♖c3 ♗g4?! 25.f3 ♗c8 26.e3 ♗de8?! 27.♗f2± ♖h6 28.e4 ♗5e7 29.f4 g5 30.h3 ♗g7?! 31.♗b3 gf4 32.gf4 ♗eg8?! [32...♗f1! 33.♗c5 ♗c7 34.♖cd3±] 33.♗f1 ♗c7 34.♗c5 ♖f7 35.♖cd3 ♗d8 36.♗d8 ♖d8 37.♗c4± ♗h3?! 38.f5 ♗g2?! 39.♗e3+– ♖b2 40.♗e6 [40.♗d7! ♗c8 41.♗h7 ♗b4 42.♗d7+–] 40...♗e6 41.fe6 ♗e6 42.♗e6 ♗b8 43.♗d8 ♗a7 44.♖c7 b6 45.♗d7 ba5 46.ba5 h5 47.♗e6 ♗b8 48.♗h7 ♗b5 49.♗d4 ♖c5 50.♗h6 ♗b7 51.♗f6 ♗a5 52.♖c6 h4 53.♗h6 h3 54.♖c2 ♖c5 55.♗d3 a5 56.♗h3 a4 57.♗a3 ♗c6 58.♗h6 ♗b7 59.♖c4 ♗g5 60.♗b6 1-0

52.fe3 a4 53.e5 fe5 54.e4 b5 [54...ab3!+–] 55.♗d7 ♗c6 56.♗d2 ♗b6 57.♗g3 ♗d4 58.♗g4



58...a3?? [Of course just taking on b3 wins, but I wrongly thought that the text move would force resignation quickly] 59.♗a2 ♗b2 60.♗f3 ♖d6 61.♗e3 ♗e6 [Now I realized that there was no way in, and after fruitless attempts I eventually agreed to the draw] ... ½-½

18.♗e3?! [18.e4 ♗e6 19.♗d6 ♗d6 20.♗c5 ♗c7 21.f4 ♗c8 22.♗ae1 ♗e8 and White is slightly better due to the knight outpost and bad bishop, but the control of the open file and the slightly weak white queenside should be enough for Black to hold comfortably] 18...♗e5 19.♖fc1 ♗b8 20.h3 ♗b4 21.♖c3 ♗e6 22.♗a4 c5 23.♗e4 ♗b3 24.♗aa1 c4 25.♗c5 ♖c6 26.♗b4 ♖b4 27.♗c5 ♖c2 28.♗ab1 ♗a2 29.♖c2 ♗b1 30.♖c4 ♗d1 [Improving on 30...♗d2??, the game score in the database, which is clearly an input error in view of 31.♗b4+–] 31.♗h2 ♖c8 32.b4 ♖c7 33.h4 ♗a7 34.♗f3 ♗g6 35.g4 ♗e8 36.♗g3 ♗b5 37.♗e4 ♖c6 38.♗e6 ♖f3 39.♗f3 ♖d4 40.♖d3 ♖cc4 41.g5 ♗h4 42.gf6 gf6 43.♗f6 h5 44.♗h6 ♖c3! 45.♗e3 ♖b4 46.♖d2 ♖bc4 47.♗h5 ♗a3 48.♗e3 ♖ca4 49.f4 ♗a5 50.♗h2 ♗b5 51.♗f2 ♗aa5+ 0-1

Sharavdorj,Dashzeveg
Kaufman,Larry Charles
Washington DC 2009

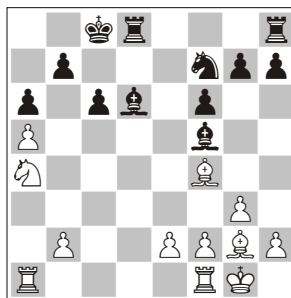
1.d4 d5 2.♖f3 ♖f6 3.c4 c6 4.♖c3 dc4 5.a4 ♗f5 6.♗e5 ♖bd7 7.♖c4 ♖c7 8.g3 e5 9.de5 ♗e5 10.♗f4 ♖fd7 11.♗g2 f6 12.0-0 0-0-0 13.♗e3 ♗e6 14.♖c2?! [14.♖cd5! ♖a5! 15.♖c1 ♖b6 16.♖b6 ab6 17.♖c2 ♖d2 18.♗fd1 ♖c2 19.♗d8 ♖d8 20.♖c2 ♗d6 21.♖d4 ♗d7=; 14.♖c1 ♖a5 15.♖cd5 transposes] 14...g5 [14...♗b8 15.a5 a6 16.♖e4 g5+] 15.♗e5 ♖e5 [15...♗e5 16.a5 a6 17.♖e4 ♗e7 is similar to the text but more precise] 16.♗e4?! [16.a5=] 16...♗e7+ [Black's bishop pair gives him the edge] 17.♖c4 ♖c7 18.♗fd1 ♗e5 19.♗a3?! ♖b6 20.♖dc1 a5 21.♖d2 ♖b4+ 22.♖ab1 h5 23.♖f3 ♖f3 24.♗f3 ♗b8 25.♗a3 g4 [25...♗d6! 26.♗e3 ♗e5+–] 26.♗e3 ♗f7 27.♗g2 ♗d4 28.♖c3 h4 29.♗e4 hg3 30.hg3 ♗e4 31.♗e4 ♗b3 32.♖d2 ♗d6 33.♗f5? ♗g3+– 34.♖e4 ♖d2 35.♖d2 ♗h2 36.♗g2 ♗a4 37.♗d3?! ♗e5 [37...♗c7!] 38.♖c4 ♗c7 39.♖d2 ♗h2 40.♗g1 ♗h6 41.b3 ♗b5 42.♗b5 cb5 43.♖c5 b4 [43...a4!+–] 44.♖c4 ♗h3 [44...b6!+–] 45.e3 b6 46.♖c6 ♗f3 47.♗g2 ♗f5 48.e4 ♗f4 49.♗e6 ♗b7 50.♗e3 ♗f3 51.♗e7 ♗e3

In Reverse Chronological Order

Esen,Baris
Balogh,Csaba

Novi Sad Ech-t2009 (1)

1.d4 d5 2.c4 c6 3.♖f3 ♖f6 4.♖c3 dc4 5.a4 ♗f5 6.♗e5 ♖bd7 7.♖c4 ♖c7 8.g3 e5 9.de5 ♗e5 10.♗f4 ♖fd7 11.♗g2 f6 12.0-0 0-0-0 13.♗e5 ♗e5 14.♖b3 ♖f7 15.♖f7 ♖f7 16.a5! a6 17.♖a4 ♗d6 [17...♗e5 18.♖b6 ♗b8 19.♖c4 ♗d6 20.♖d6 ♗d6 21.♗a4 ♗c2 22.♗a3 ♗e8 23.♖c3 and although the open file gives Black some compensation for the bishop pair, one must slightly prefer White]



Kirusha,Andrey
Massironi,Marco
St Petersburg 2008 (7)

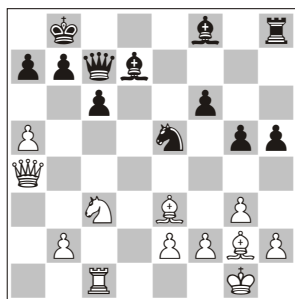
1.♖f3 d5 2.d4 ♖f6 3.c4 c6 4.♖c3 dc4 5.a4 ♗f5 6.♗e5 ♖bd7 7.♖c4 ♖c7 8.g3 e5 9.de5 ♗e5 10.♗f4 ♖fd7 11.♗g2 f6 12.0-0 0-0-0 13.♖c1 g5?! [Considered best but insufficient before the Hector novelty] 14.♗e3?! [14.♗e5!] 14...♗e6 15.♗e5 ♗e5 [15...♖e5+] 16.♖e4 ♗e7 17.♖c5 ♗c4?? [17...♗c5 18.♖c5 ♗b8=] 18.♖b7± ♗e2?! 19.♖d8+– ♗f1? 20.♖c6 ♖c6 21.♗c6 ♗d3 22.♖d5 1-0

Kristjansson,Stefan
Petursson,Gudni Stefan
Reykjavik ch-ISL rapid 2007 (2)

1.d4 d5 2.c4 c6 3.♖f3 ♖f6 4.♖c3 dc4 5.a4 ♗f5 6.♗e5 ♖bd7 7.♖c4 ♖c7 8.g3 e5 9.de5 ♗e5 10.♗f4 ♖fd7 11.♗g2 f6 12.0-0 0-0-0 13.♖c1 g5?! 14.♗e5! ♗e5 15.♗e3 a5 16.♖b5 [16.f4 gf4 17.♗f4±] 16...cb5 17.♗b6 ♖c1 18.♗ac1 ♖d7 19.♗fd1? [19.♗d8 ♖d8 20.♗fd1±] 19...♗d6 20.♖c7 ♗e8 21.♗b7 ♗e7?? [21...♗d7+] 22.♗d8+– ♗d8 23.ab5 ♗c8 24.♗b8 ♗d7 25.♗c6 ♗e7 26.♗g2 ♗f5 1-0

Krüger,Rainer
Wahedi,Ahmad Siar
 Germany tt 2006/07 (7)

1.d4 d5 2.c4 c6 3.♖f3 ♗f6 4.♗c3
 dc4 5.a4 ♗f5 6.♗e5 ♗bd7 7.♗c4
 ♖c7 8.g3 e5 9.de5 ♗e5 10.♗f4
 ♗fd7 11.♗g2 f6 12.0-0 0-0-0
 13.♗e5 ♗e5 14.♖b3 h5? [14...♖f7!
 is necessary and nearly equal,
 Kacheishvili-Kaufman, Washington DC
 2009] 15.a5?! [15.♗b5! ♖a5 16.♖ac1
 ♗d7 17.♗e5 fe5 18.♖d5!+-] 15...♗d4
 16.♖a4 [16.a6±] 16...♖a4 17.♖a4 g5
 18.♗e3 ♗b8 19.♖c1 ♗d7??

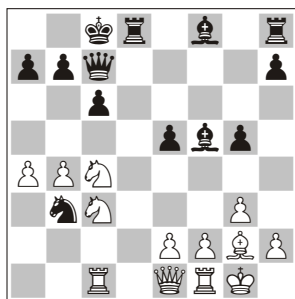


20.♖e4?? [20.♗a7!! ♗a7 21.♗b5 cb5
 22.♖d4+-] 20...♖a5= 21.♗d4 ♗d6
 22.♖d1 ♗c7 23.♖c1 ♗c8 24.♗d5
 ♖f8 25.b4 ♗b4? 26.♗e5 ♖e8
 27.♗b4 ♖e5 28.♖c4 ♗e6
 29.♗c6+- bc6 30.♖c6 ♗d8
 31.♗e4? ♖b6 32.♖a8 ♗e7 33.♖a1
 ♖a5 34.♖b1 ♗d5= [35.♖h8 ♗e4
 36.♖g7 leads to perpetual check, but
 apparently White either resigned or flagged]
 0-1

Hoie,Johannes
Hersvik,Daniel
 Moss ch-NOR B 2006 (1)

1.d4 d5 2.c4 c6 3.♖f3 ♗f6 4.♗c3
 dc4 5.a4 ♗f5 6.♗e5 ♗bd7 7.♗c4
 ♖c7 8.g3 e5 9.de5 ♗e5 10.♗f4
 ♗fd7 11.♗g2 0-0-0?! [This move order
 is dubious due to 12.♗d5!] 12.0-0 f6
 13.♖c1! [This and 13.♗e5 look best]
 13...♗c5 14.♖e1 g5? [14...a5! 15.♖d1
 ♗e7 16.♗a5 ♖a5 17.♗d5 ♖e1 18.♗e7

♗c7 19.♖fe1 (19.♖de1 ♗e6=) 19...♖d1
 20.♖d1 ♗g4 21.a5 ♗e2 22.♖c1 (22.♖e1
 ♗b5 23.♗e5 fe5 24.♖e5 ♗d3=) 22...♗d3
 23.♗e5 ♗e5 24.f4 ♗d3 25.♖c2 ♗g4
 26.♗d5 ♗b8 27.♗e3 ♗e6 28.♖d2 ♗c5
 29.b4 ♗a6 and White has a tiny edge]
 15.♗e5 fe5 16.b4 ♗b3



17.♗b5! ♖b8?? [17...♖g7 18.♖c3±]
 18.♖c3+- ♗c1 19.♖c1 a6?
 20.♗b6X 1-0

Somogyi,Istvan
Nagyajtai,Gabor

Hungary tt-2 2005/06 (10)

1.d4 d5 2.c4 c6 3.♖f3 ♗f6 4.♗c3
 dc4 5.a4 ♗f5 6.♗e5 ♗bd7 7.♗c4
 ♖c7 8.g3 e5 9.de5 ♗e5 10.♗f4
 ♗fd7 11.♗g2 f6 12.0-0 0-0-0
 13.♖c1 ♗e6?! 14.♗e5 ♗e5
 15.♖e3 ♗b8 16.♖fc1 g5?? [16...a6?
 17.♗b5!+-; 16...♖a5 17.♗e4±]
 17.♗b5+- 1-0

Hönig,Bernd
Honkakoski,Paavo Ilmari
 cr Email 1998

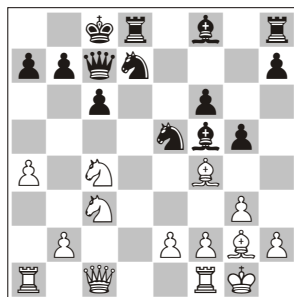
1.d4 d5 2.c4 c6 3.♖f3 ♗f6 4.♗c3
 dc4 5.a4 ♗f5 6.♗e5 ♗bd7 7.♗c4
 ♖c7 8.g3 e5 9.de5 ♗e5 10.♗f4
 ♗fd7 11.♗g2 f6 12.0-0 0-0-0
 13.♗e5 fe5?! [13...♗e5!] 14.♗g5 ♗f6
 15.♖b3 ♗c5 16.a5± h6? 17.♗f6
 gf6 18.a6 b6 19.♗a4 ♖d6 20.♗c5
 bc5 21.♖fc1+- ♗e6 22.♖f3 ♖hd8
 23.♖f6 ♗g4 24.♖h4 ♗e2 25.♖e4
 ♗b5 26.b3 ♗b8 27.♖e1 ♖e7
 28.♖c5 e4 29.♗f1 ♖d5 30.♖d5 ♖d5

31.♗b5 ♖b5 32.♖e3 h5 33.♖a4
 ♖e5 34.♖c4 ♖e6 35.♖c3 ♖d7
 36.♖d4 ♖e8? 37.♖b4 1-0

Vologin,Viktor
Bang,Andreas

Copenhagen 1991 (3)

1.♗f3 d5 2.d4 ♗f6 3.c4 c6 4.♗c3
 dc4 5.a4 ♗f5 6.♗e5 ♗bd7 7.♗c4
 ♖c7 8.g3 e5 9.de5 ♗e5 10.♗f4
 ♗fd7 11.♗g2 f6 12.0-0 0-0-0
 13.♖c1 g5?!



14.♗e5 ♗e5 15.♗e3 ♗c4 [15...a5
 16.f4±] 16.b3? [16.♗a7! ♖a5 17.♗e3±]
 16...♗e3 17.♖e3 ♗b8 18.♗e4?!
 [18.a5 a6?!] 18...♖e8 19.♖d4 ♗e4
 [19...♖e7!+] 20.♗e4 ♗g7 21.♗f5
 ♖e2 22.♖d3 ♖e5 23.♖ad1 h5
 24.b4 ♖d5 25.♖f3 g4 26.♖e4 ♖e5
 27.♖d3 a6 [27...♗h6±] 28.♖fe1
 ♖he8 29.♖e5 ♖e5 30.♖d8 ♖d8
 31.♖d8 ♗c7 32.♖d7 ♗b6 33.a5
 ♗a7 34.♗g4 hg4= ½-½

Jensen,Poul Hedegaard
Andersson,Henrik
 cr 1984

1.d4 d5 2.c4 c6 3.♖f3 ♗f6 4.♗c3
 dc4 5.a4 ♗f5 6.♗e5 ♗bd7 7.♗c4
 ♖c7 8.g3 e5 9.de5 ♗e5 10.♗f4
 ♗fd7 11.♗g2 f6 12.0-0 0-0-0
 13.♗e3 ♗b6? [13...♗e6= Sharavdorj-
 Kaufman, Washington DC 2009]
 14.♖b3+- ♗g6 15.a5 ♗bd7 16.a6
 b6 17.♖a4 ♗d6?! 18.b4 b5
 19.♗b5 cb5 20.♖b5 ♖b6 21.♖ac1
 ♗c7 22.♖c7 1-0